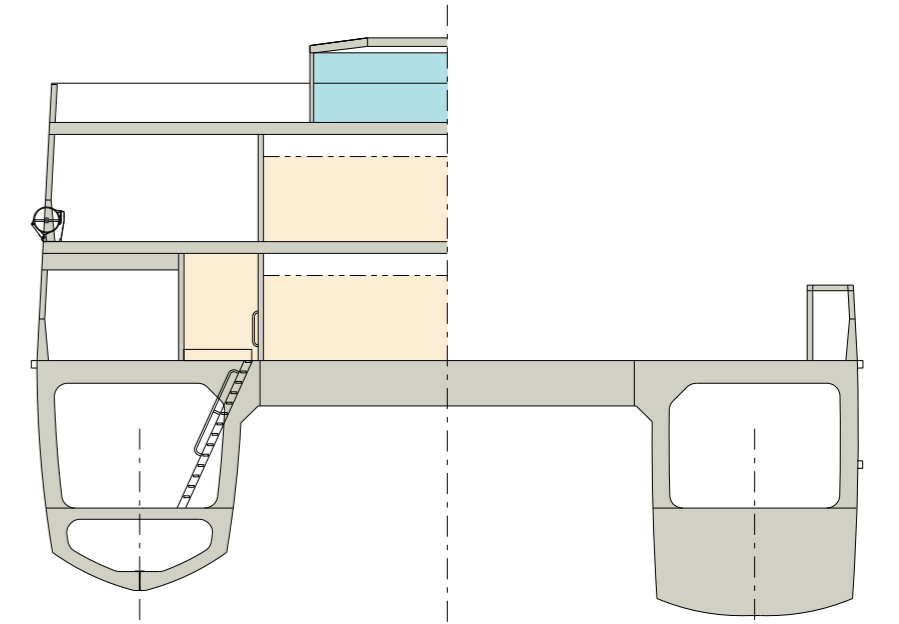


OUTBOARD PROFILE



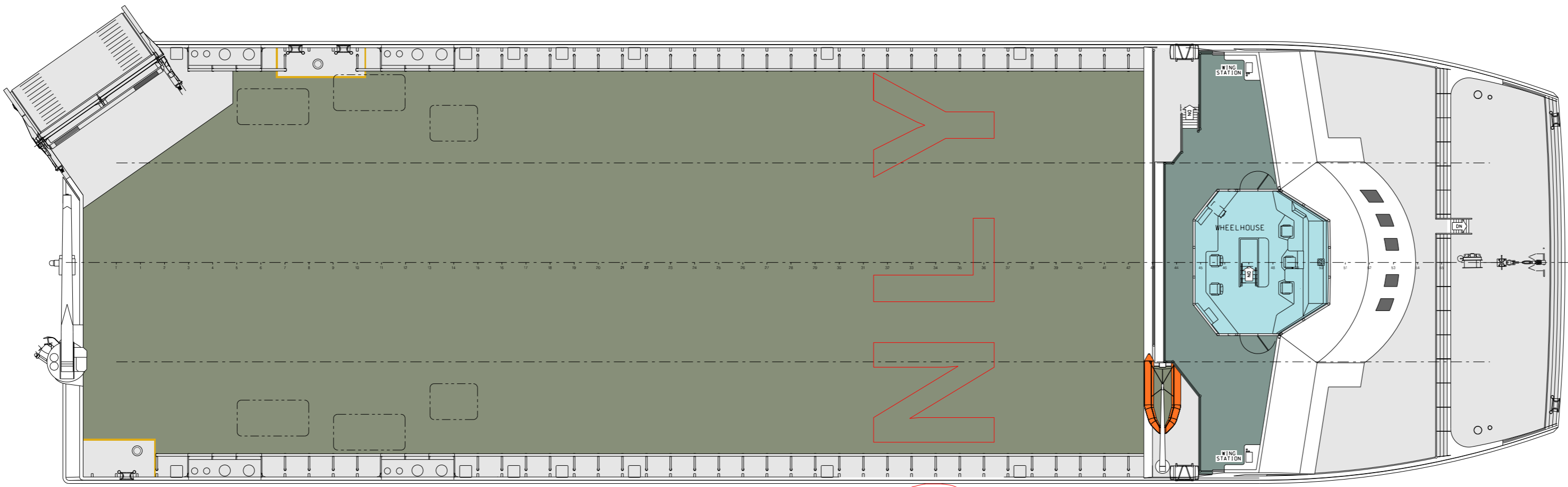
TYPICAL SECTIONS



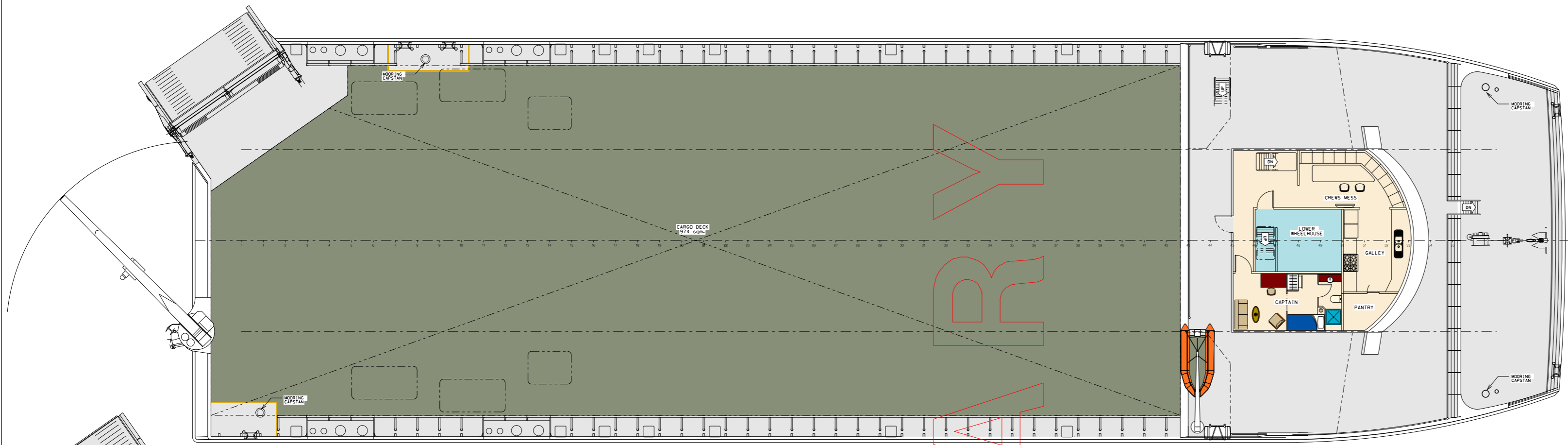
75m

PRINCIPAL PARTICULARS

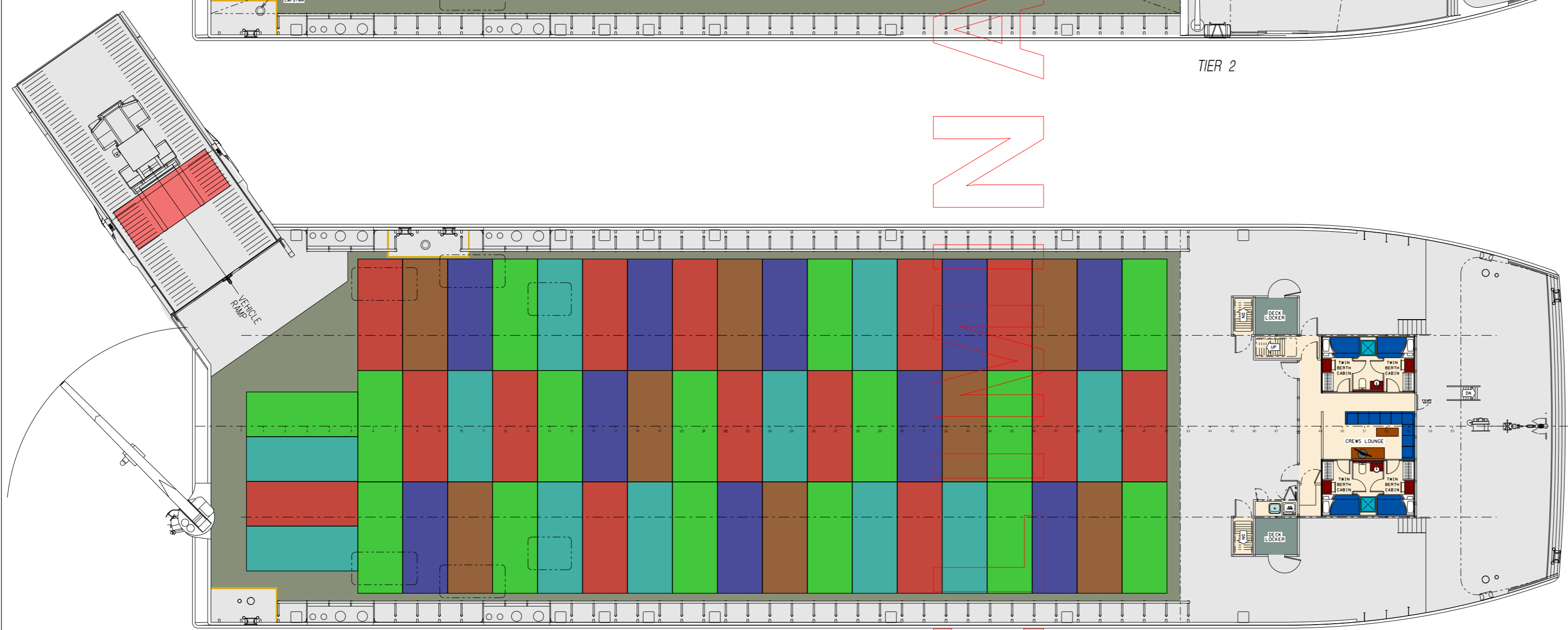
- LENGTH OVERALL - 74.8m
- WATERLINE LENGTH - 71.6m
- BEAM OVERALL - 22.0m
- HULL BEAM (MOULDED) - 5.4m
- DRAFT - 3.4m
- CARGO DECK - 974 sqm.
- DWT - 1000 t
- SHIPS COMPANY - 9 BERTHS



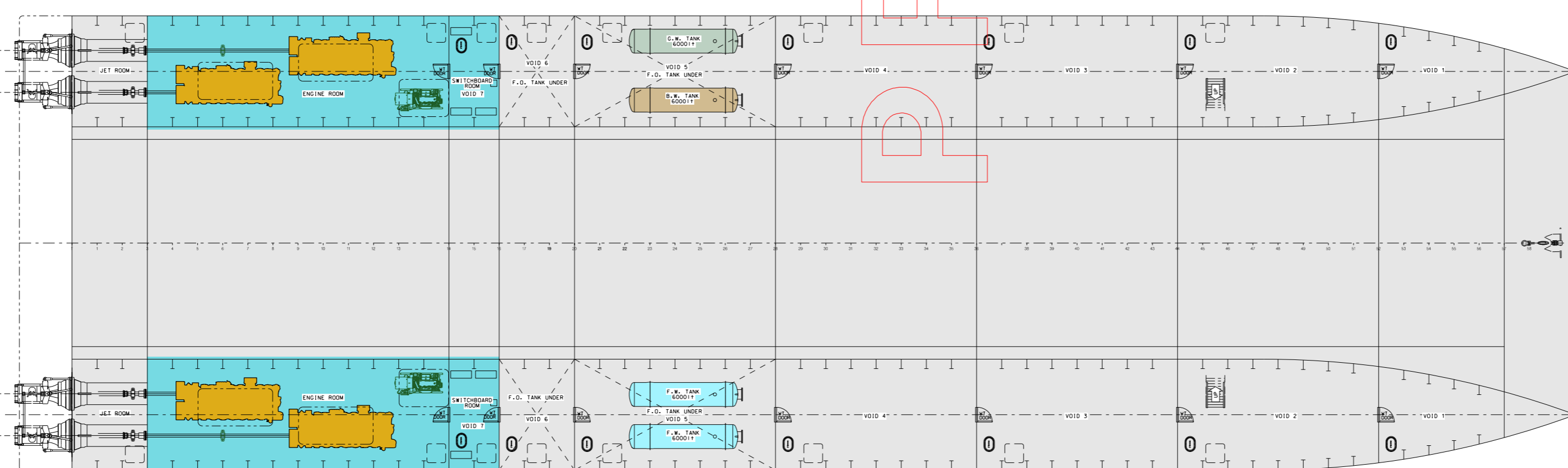
TIER 3 (BRIDGE DECK)



TIER 2



TIER 1



PLAN BELOW DECKS



16 BENDER DRIVE MOONAH TASMANIA 7009 AUSTRALIA
 PHONE/FAX +613 6274 1845
 EMAIL revolutiondesign@revolutiondesign.com.au
 INTERNET www.revolutiondesign.com.au

ISSUED TO:	ISSUE DATE:
ISSUED BY:	APPROVED BY:
DRAWN BY: G. STEWART	DATE: 16 APRIL '14
SCALE: 1:200 (A1)	REV. DATE:
DWG No: CPV-74-32-910	REV. DATE:

THE DRAWING AND THE INFORMATION CONTAINED HEREIN IS THE SOLE PROPERTY OF REVOLUTION DESIGN AND SHALL BE KEPT IN CONFIDENCE. IT IS NOT TO BE REPRODUCED OR TRANSMITTED IN ANY FORM OR BY ANY MEANS WITHOUT PERMISSION IN WRITING.