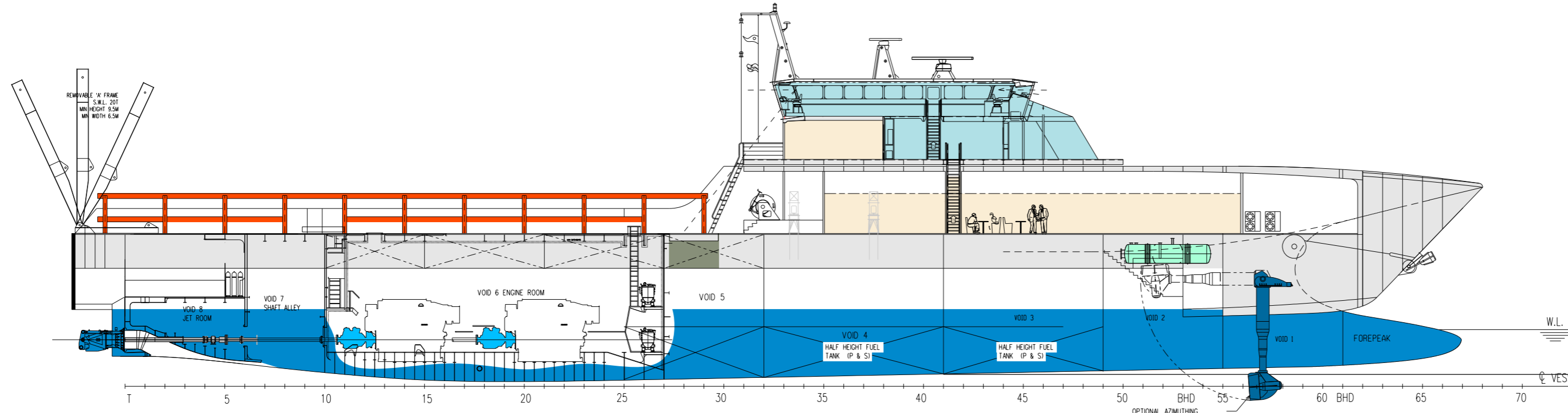
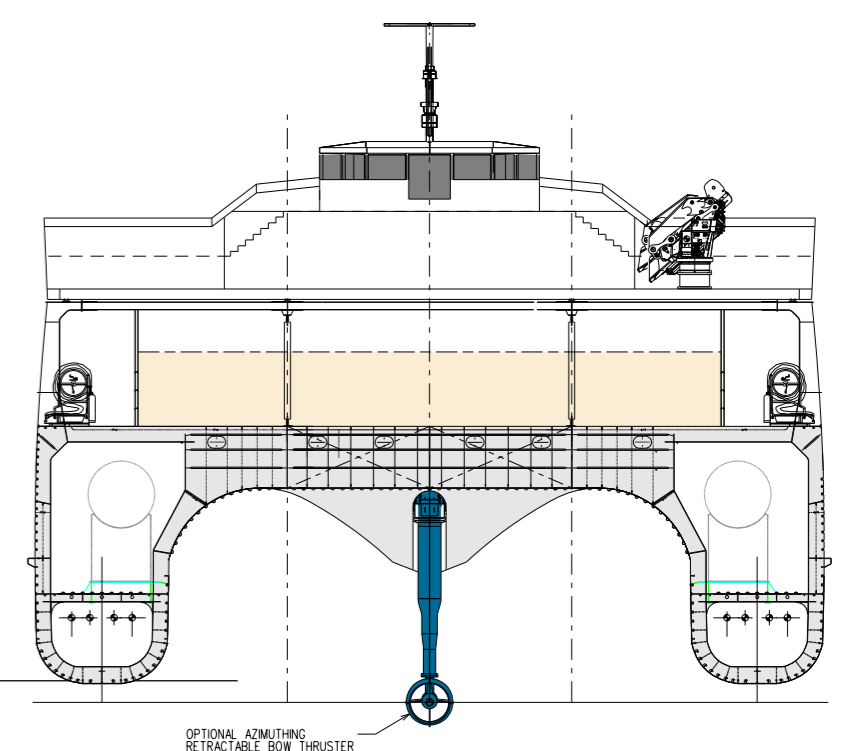


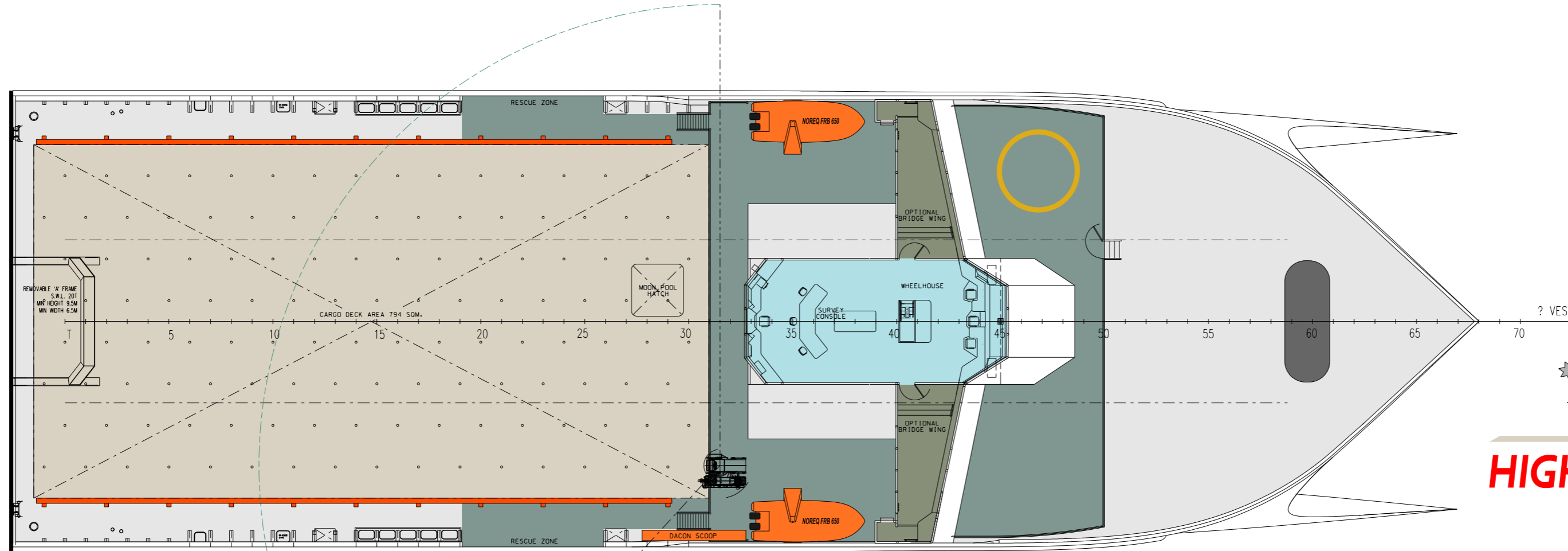
OUTBOARD PROFILE



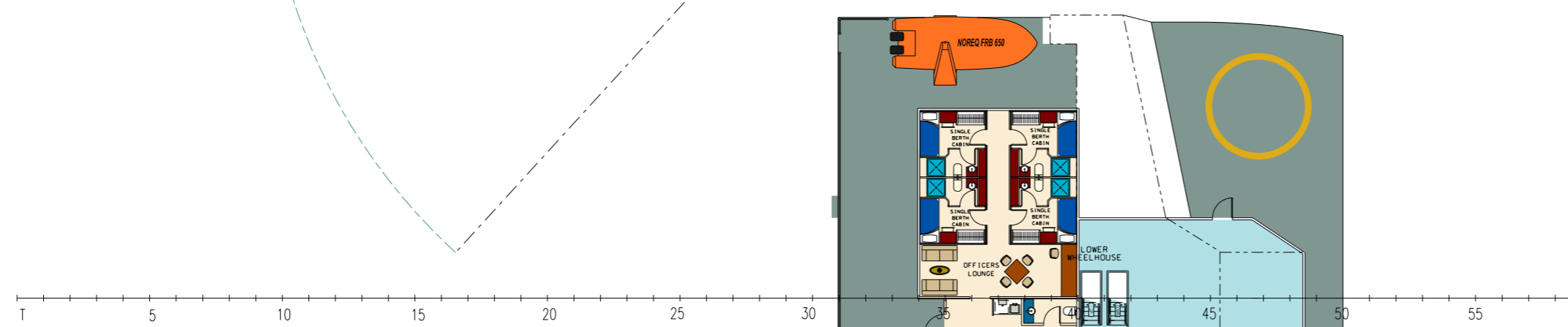
INBOARD PROFILE



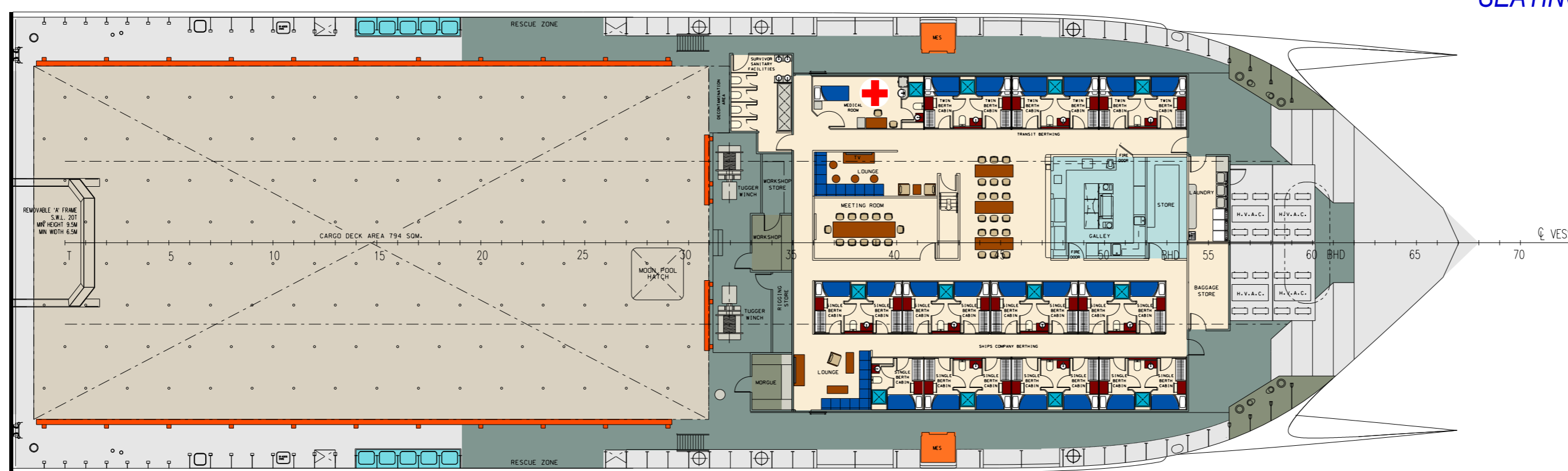
MIDSHIP SECTION



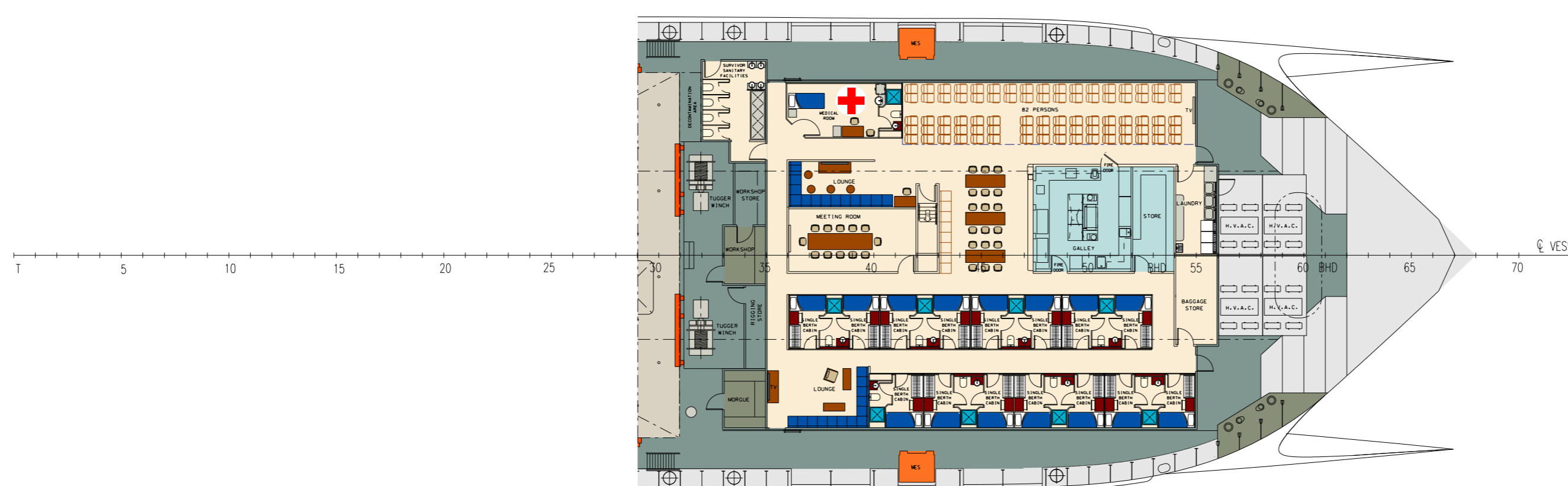
UPPER DECK PLAN AND WHEELHOUSE



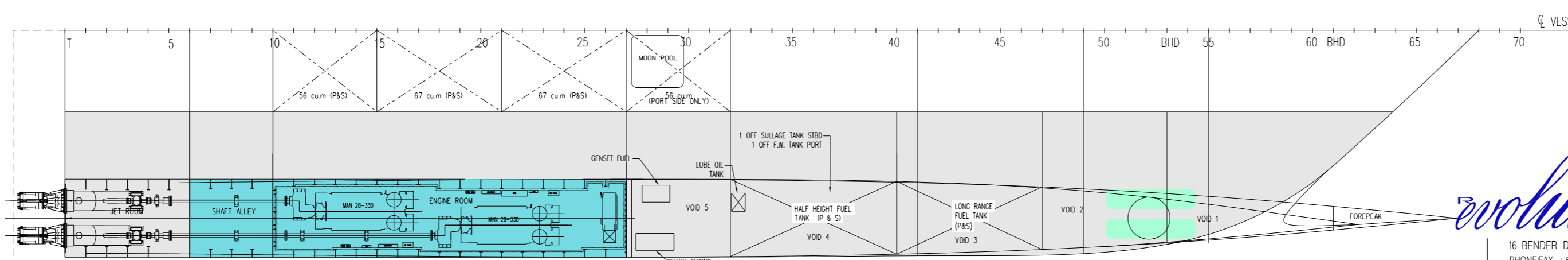
BOAT DECK AND LOWER WHEELHOUSE



ACCOMMODATION DECK



ACCOMMODATION DECK (ALTERNATIVE LAYOUT 110 seats)



PLAN BELOW DECKS

84

**HIGH SPEED
MULTI-PURPOSE
STAND-BY VESSEL**

PRINCIPAL PARTICULARS

- LENGTH OVERALL - 84.60m
- WATERLINE LENGTH - 79.00m.
- BEAM OVERALL - 26.62m.
- HULL BEAM (MOULDED) - 4.33m.
- CARGO DECK - 794 sqm.

ACCOMMODATION - PRIMARY ARRANGEMENT

CABIN ACCOMMODATION - 34 PERSONS

ACCOMMODATION - ALTERNATIVE ARRANGEMENT

CABIN ACCOMMODATION - 22 PERSONS
SEATING - 110 PERSONS

PRELIMINARY

revolution DESIGN

16 BENDER DRIVE MOONAH TASMANIA 7009 AUSTRALIA
PHONE/FAX +613 6274 1816
EMAIL revolutiondesign@revolutiondesign.com.au
INTERNET www.revolutiondesign.com.au

84m WAVE PIERCING CATAMARAN
CONCEPTUAL
GENERAL ARRANGEMENT

ISSUED TO:	ISSUE DATE:
ISSUED BY:	APPROVED BY:
DRAWN BY: G. STEWART	DATE: 23 JAN '12
SCALE: 1:250 (A1)	REV. DATE:
DWG. No: CPV-84-32-758	REV. DATE:

THIS DRAWING AND THE INFORMATION CONTAINED THEREIN IS THE EXCLUSIVE PROPERTY OF REVOLUTION DESIGN AND IS NOT TO BE REPRODUCED OR TRANSMITTED IN ANY FORM OR BY ANY MEANS WITHOUT PERMISSION IN WRITING.