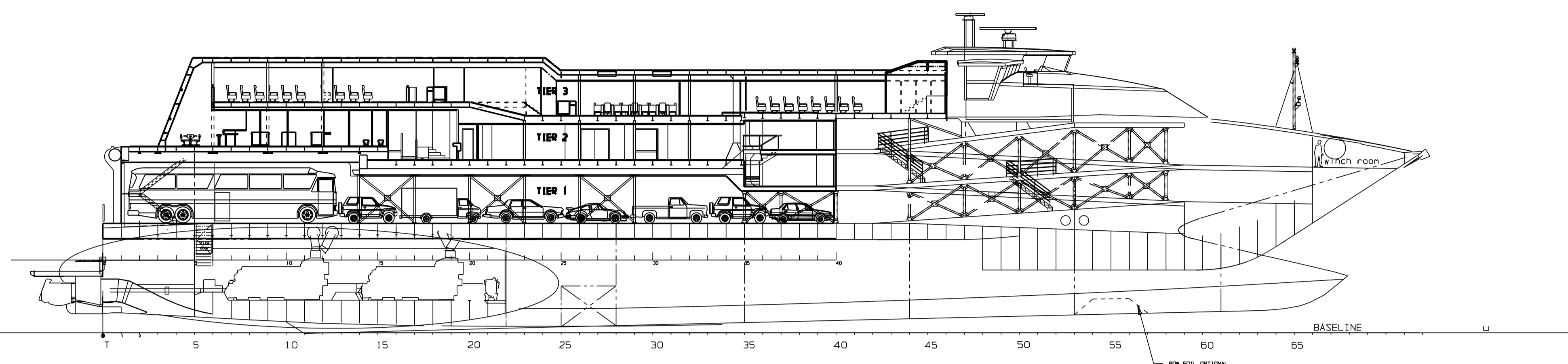
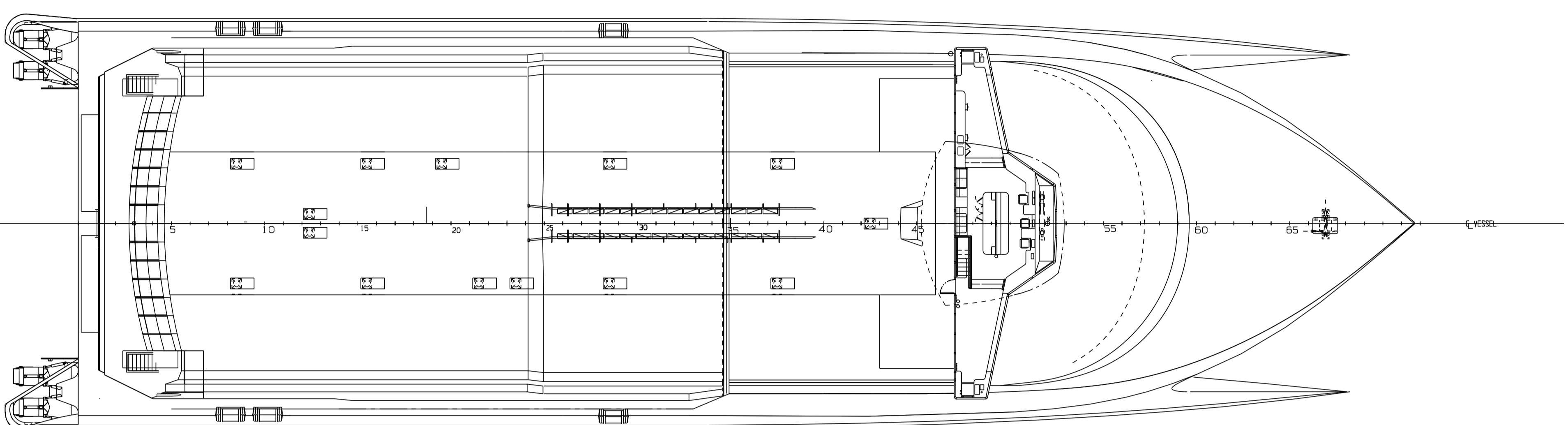


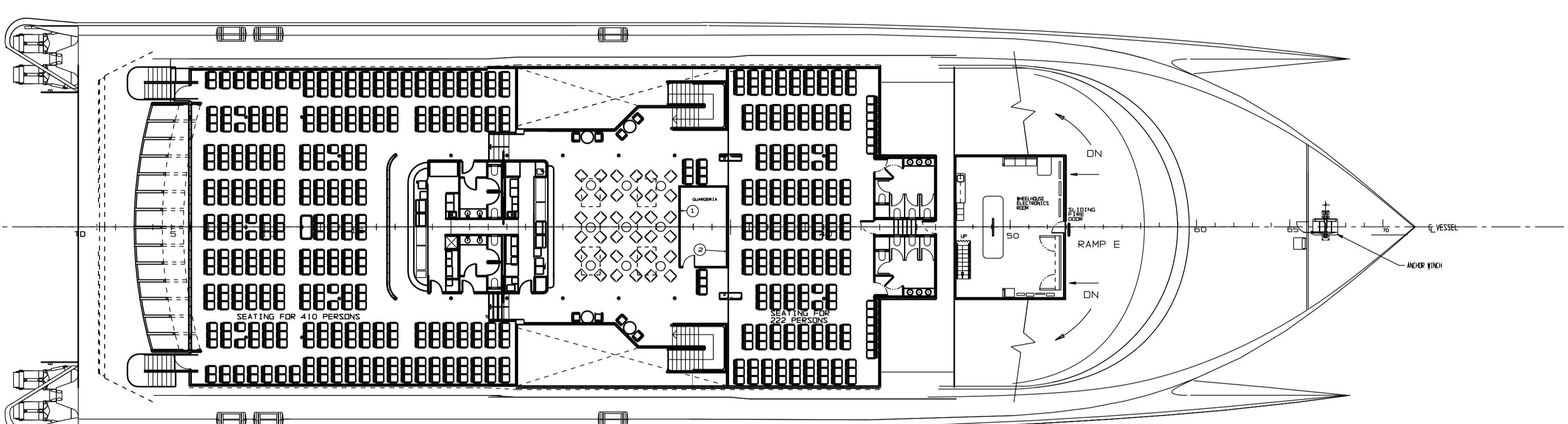
OUTBOARD PROFILE



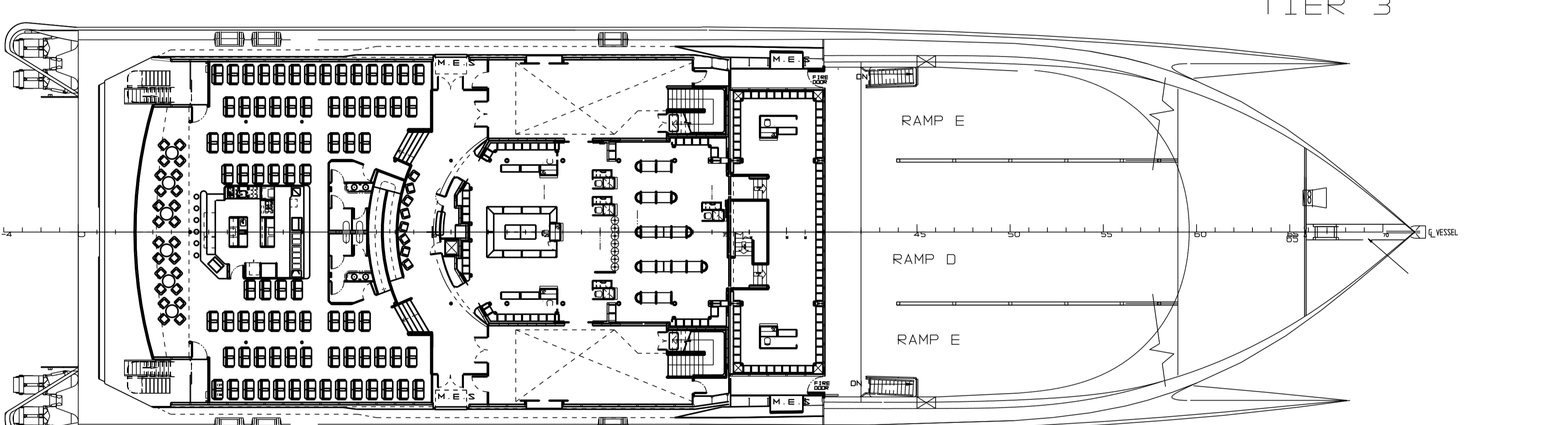
BASELINE



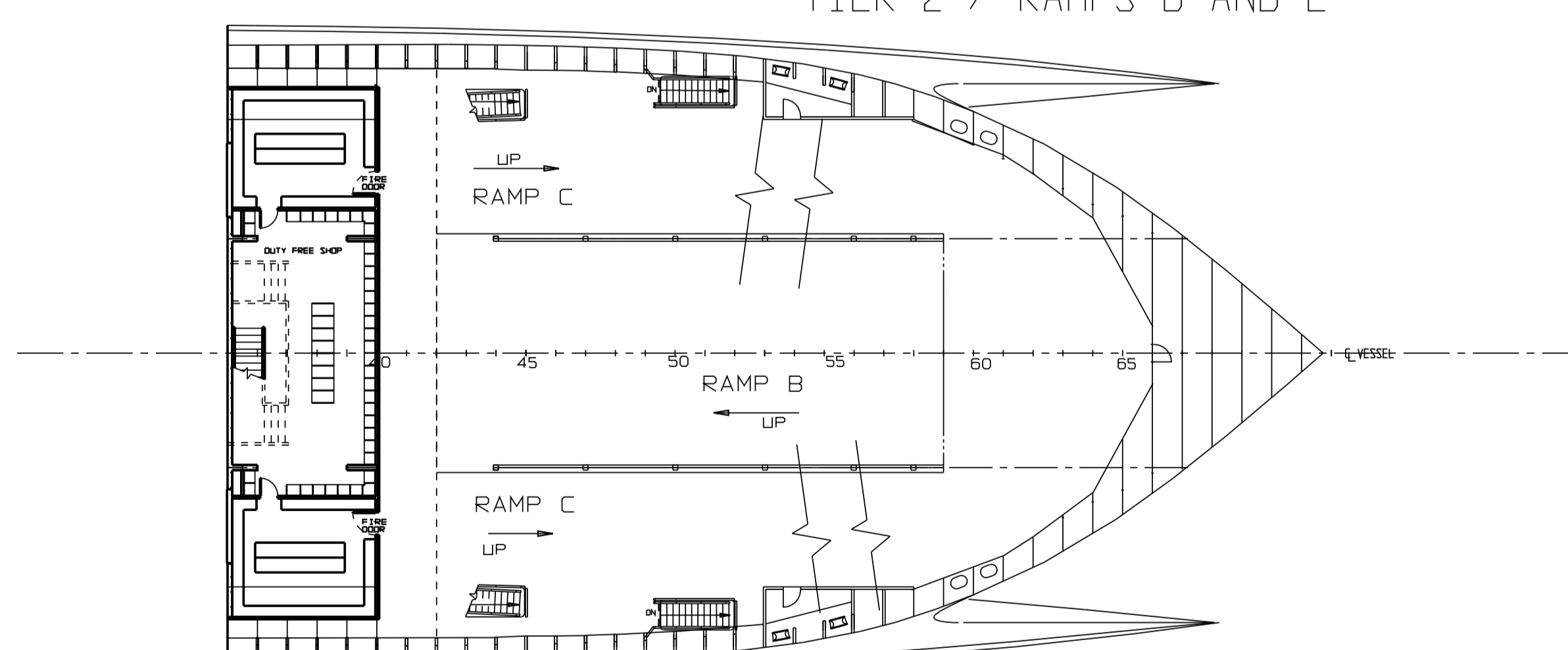
WHEELHOUSE AND ROOF PLAN



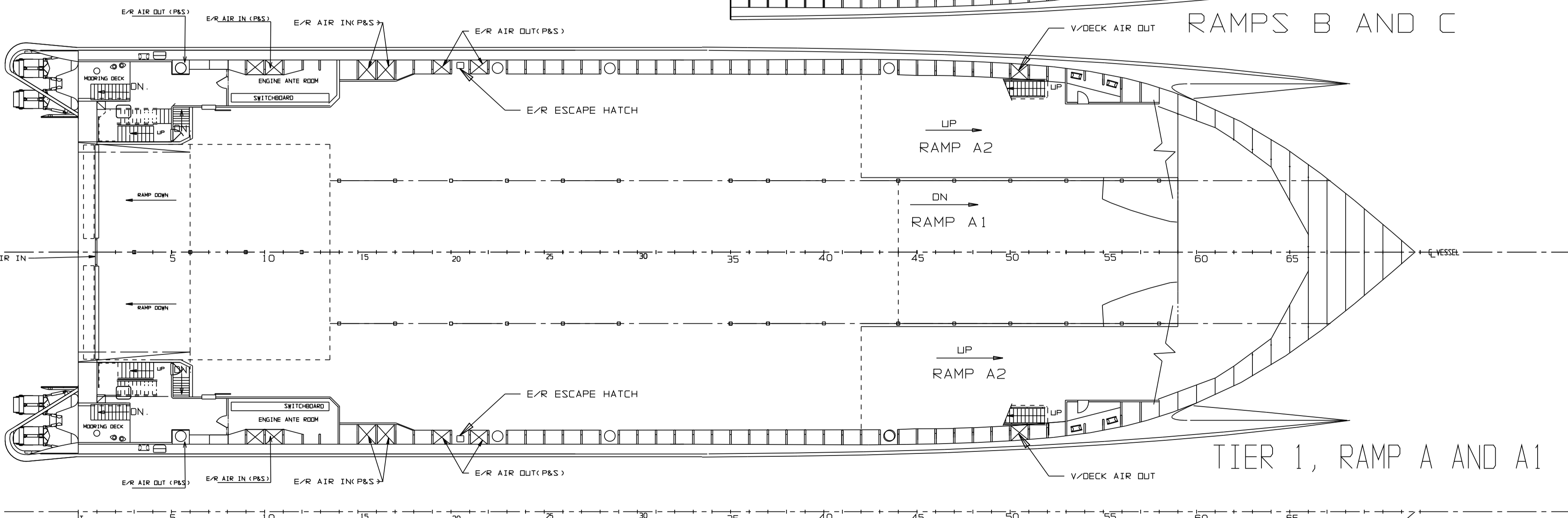
TIER 3



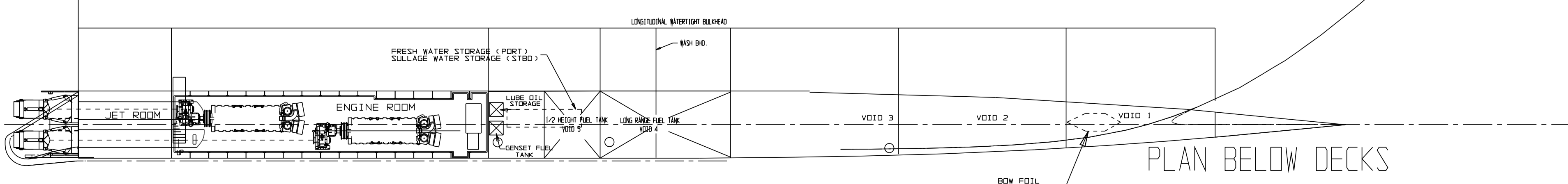
TIER 2 / RAMPS D AND E



RAMPS B AND C



TIER 1, RAMP A AND A1



PLAN BELOW DECKS

I	21 MAY '98	RJB	SEATING LAYOUT UPDATED TO AS-BUILT (D.I. 047-062)
H	11/5/98	MGR	AFT STAIRS TIER 2 PAX UPDATED TO SHOW CORRECT LAYOUT
G	9-12-97	RJB	FWD MES MOVED UP 600
F	24-11-97	G.S.	WHEELHOUSE AND DUTY FREE LAYOUTS MODIFIED
E	12-11-97	G.S.	AC SUPPORT AFT T#3 TO T#2 ESCAPE STAIRS, AFT DECK T#2 MODIFIED
D	11-9-97	RJB	PROFILE AND ROOF PLAN UPDATED (A/C STRUCTURE AND MAST)
C	8-9-97	MGR	TIER 2 FLOOR PLAN, PASSENGER LAYOUT AND DUTY FREE SHOP UPDATED WINDOWS ADDED TO DUTY FREE
B	21-8-97	MGR	WHEELHOUSE UPDATED, SUPERSTRUCTURE UPDATED, VEHICLE DECKS UPDATED AND PASSENGER LAYOUT UPDATED TO LATEST ARRANGEMENT
A	18-8-97	MGR	ROOF KNUCKLE POSITION ALTERED AND PASSENGER LAYOUT UPDATED
NO	DATE	DRN CKD	REVISION
YARD NO.	047		PASSED
18 BENDER DRIVE, MOONAH, TASMANIA 7009 AUSTRALIA TELEPHONE (002) 730077 FACSIMILE (002) 730052 - 730072			
TITLE <b>GIM WAVE PIERCING CATAMARAN FERRY</b> PRELIMINARY GENERAL ARRANGEMENT		DRAWN BY G. DOYLE	SCALE 1 : 200
		CHECKED BY	DATE 18-8-1997
		ORG. No. 047-09-32-001	REV I